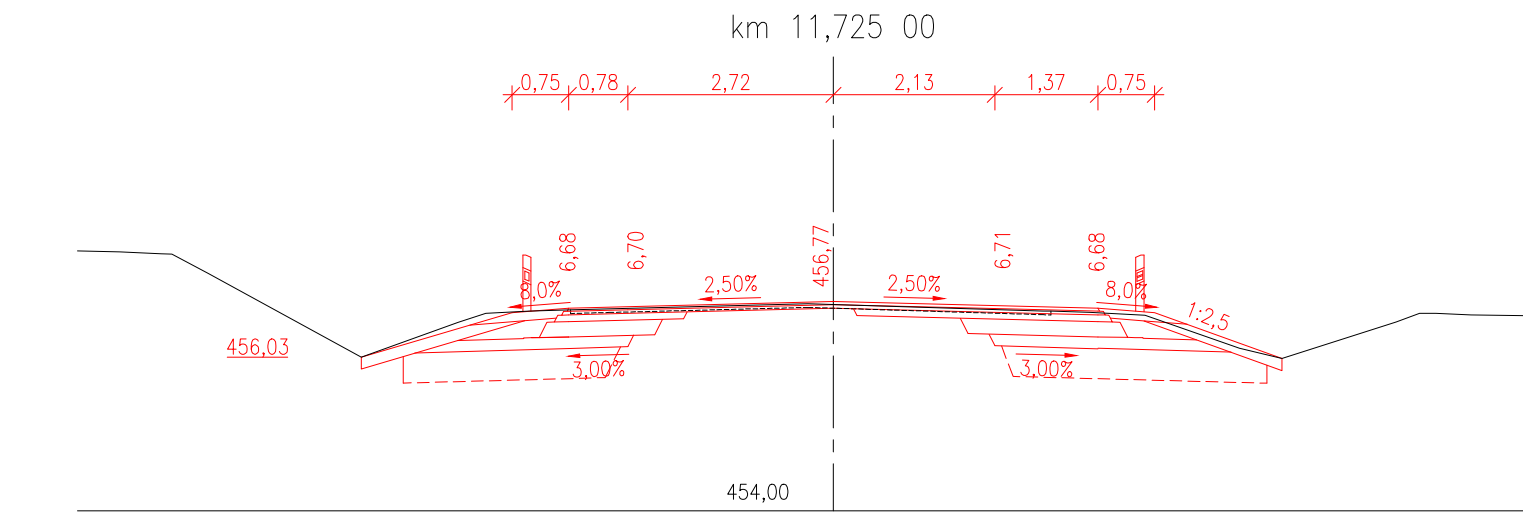
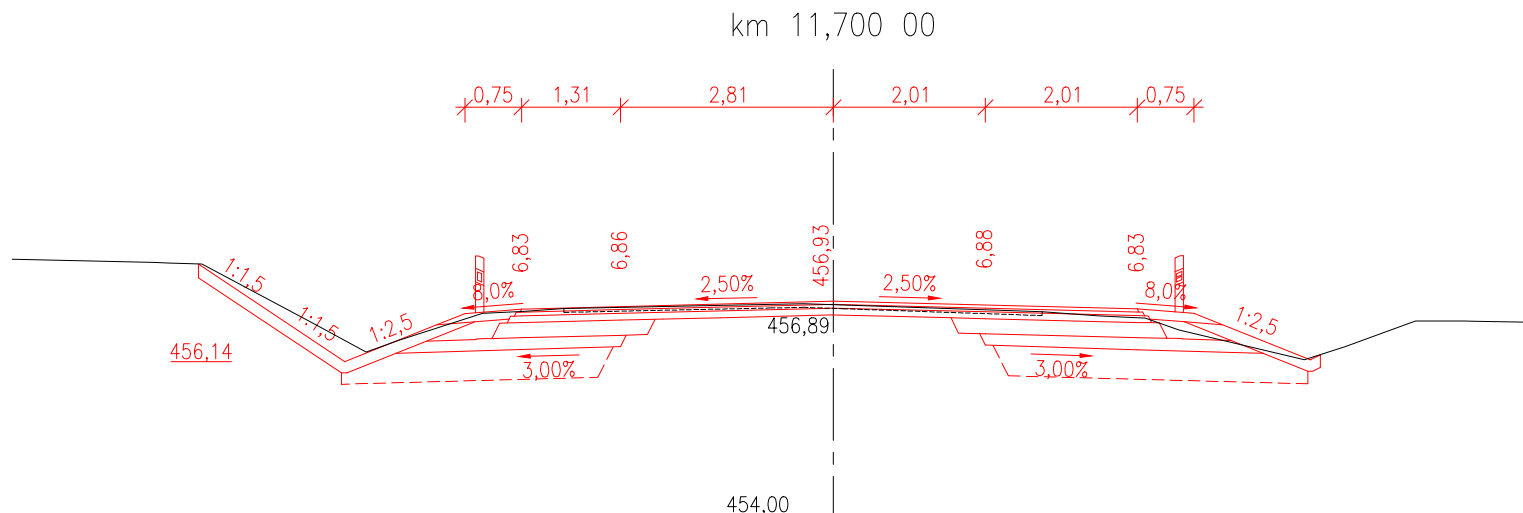
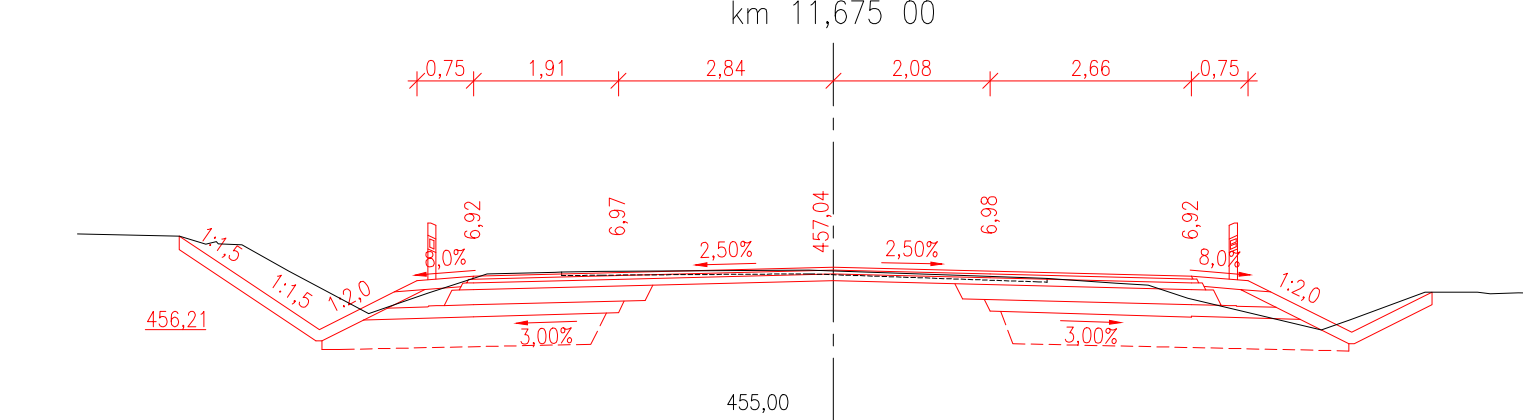
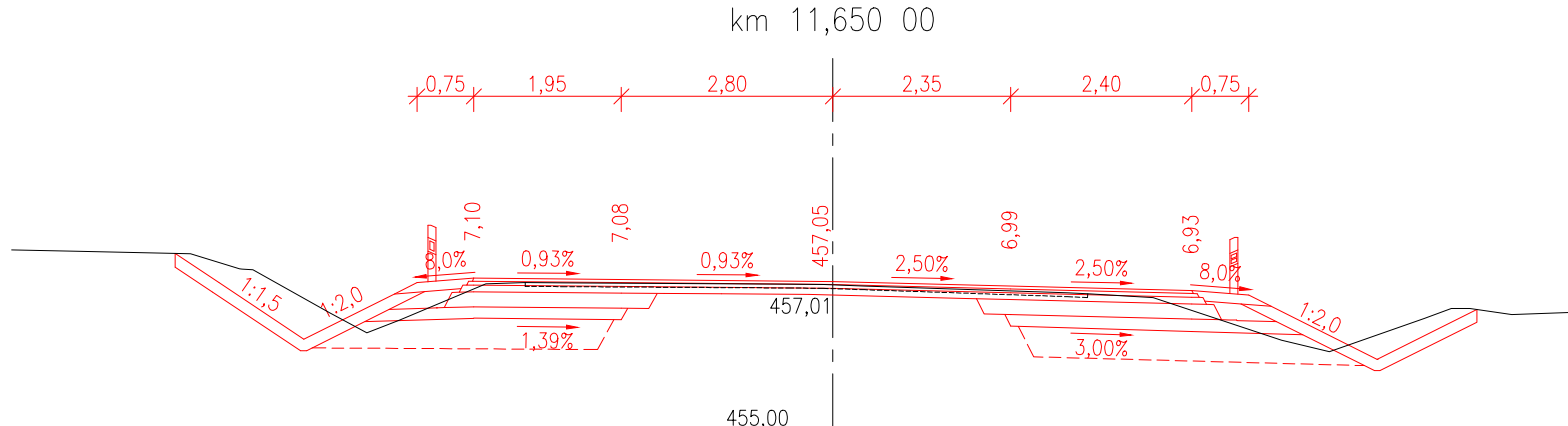
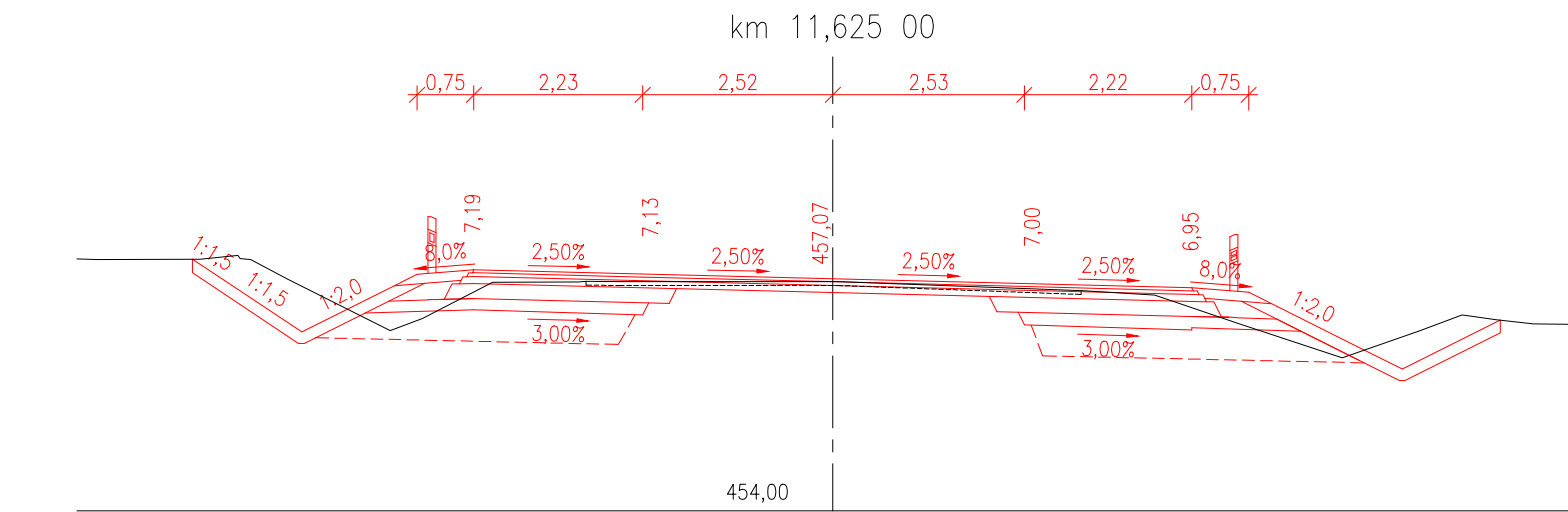
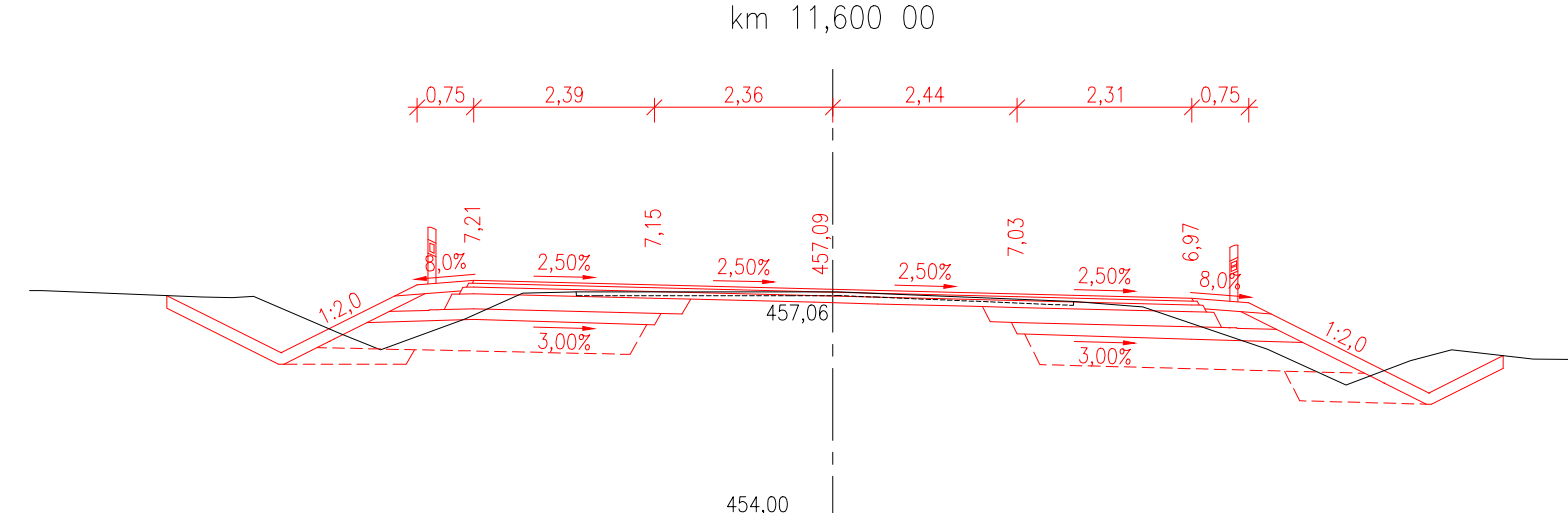
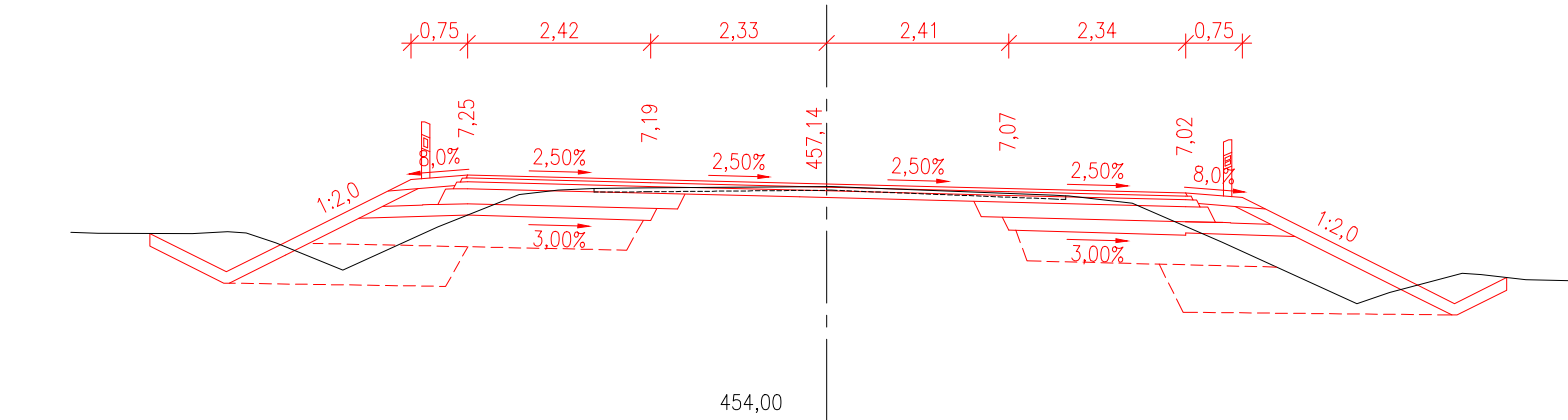
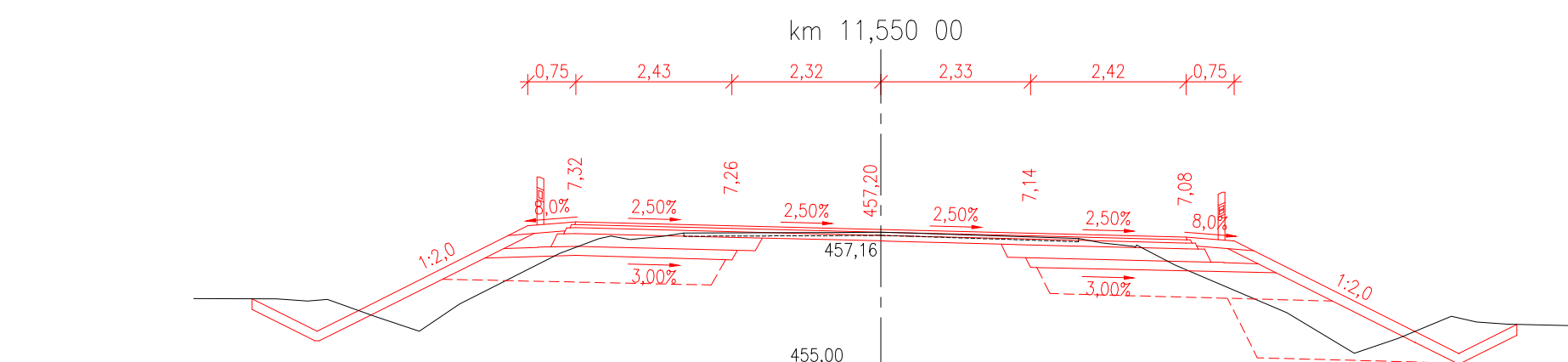
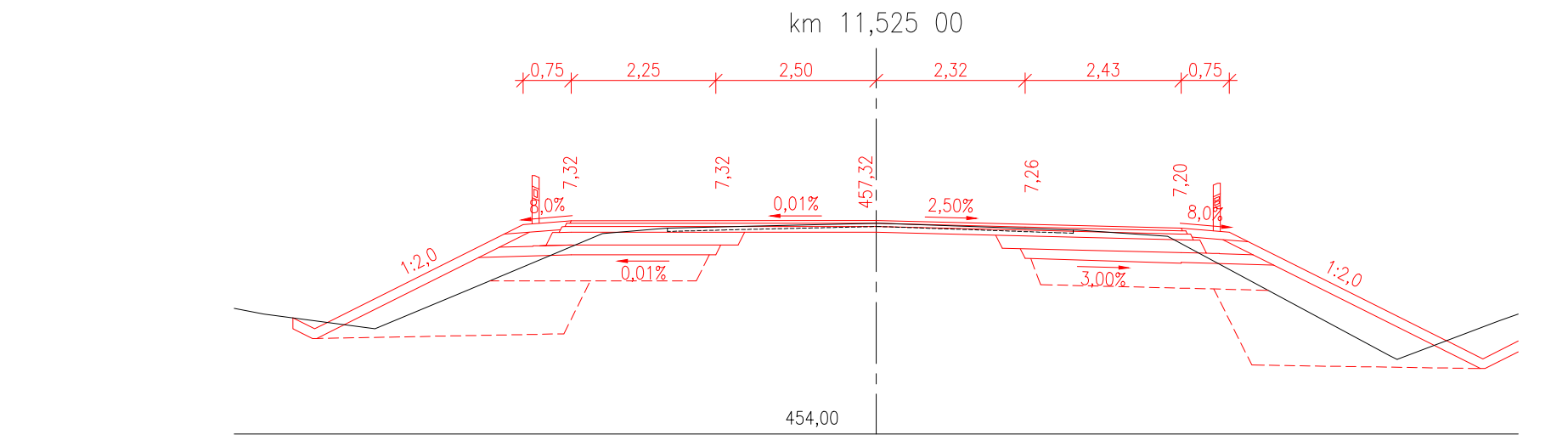
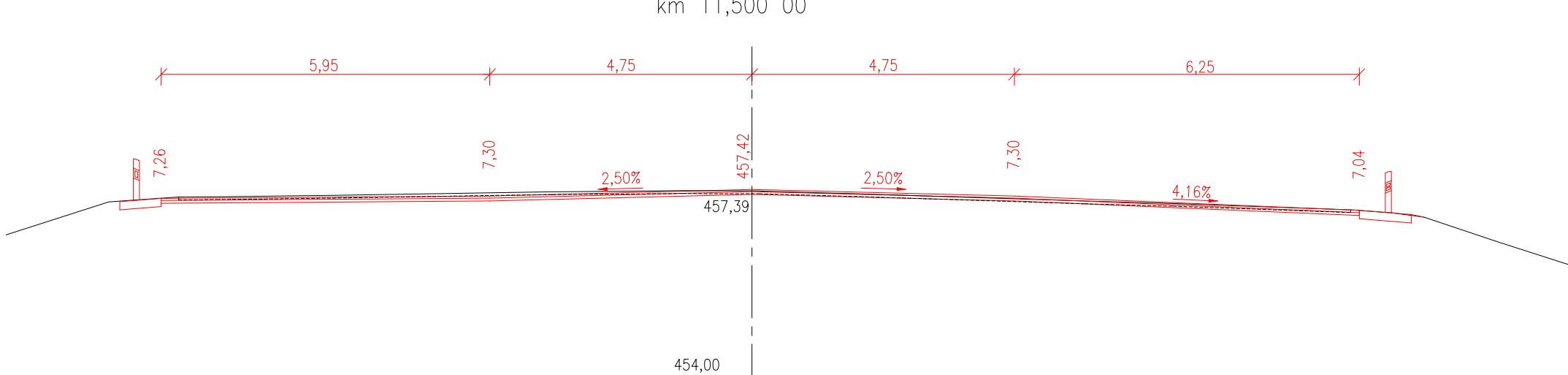
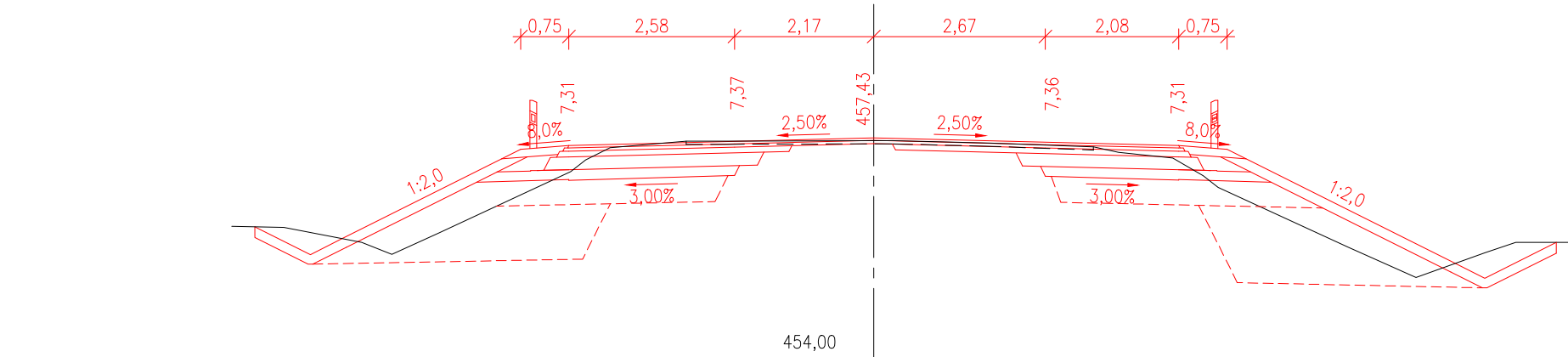
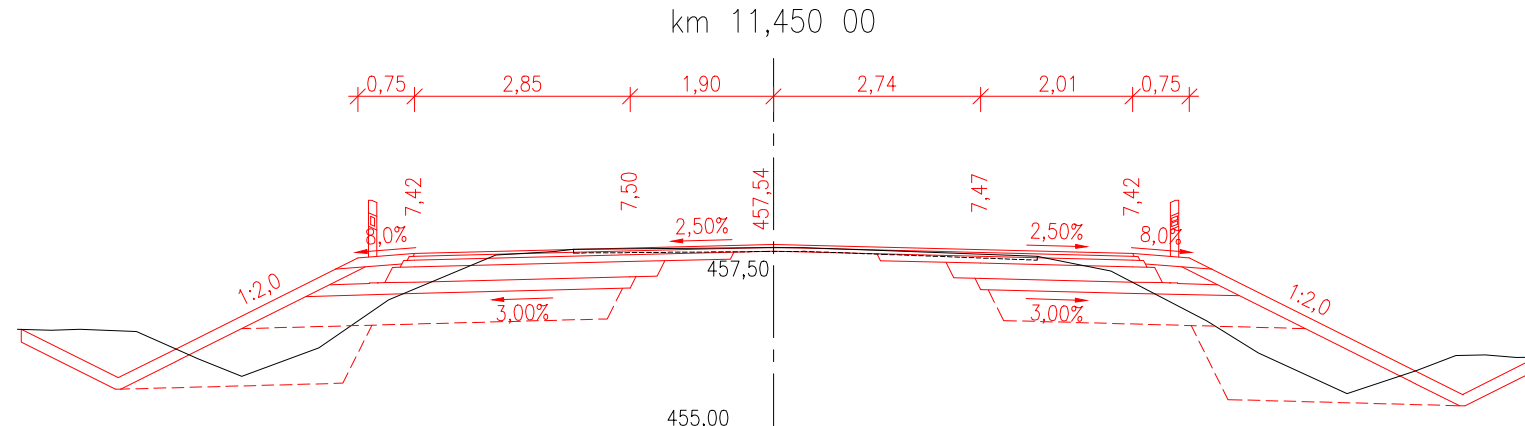
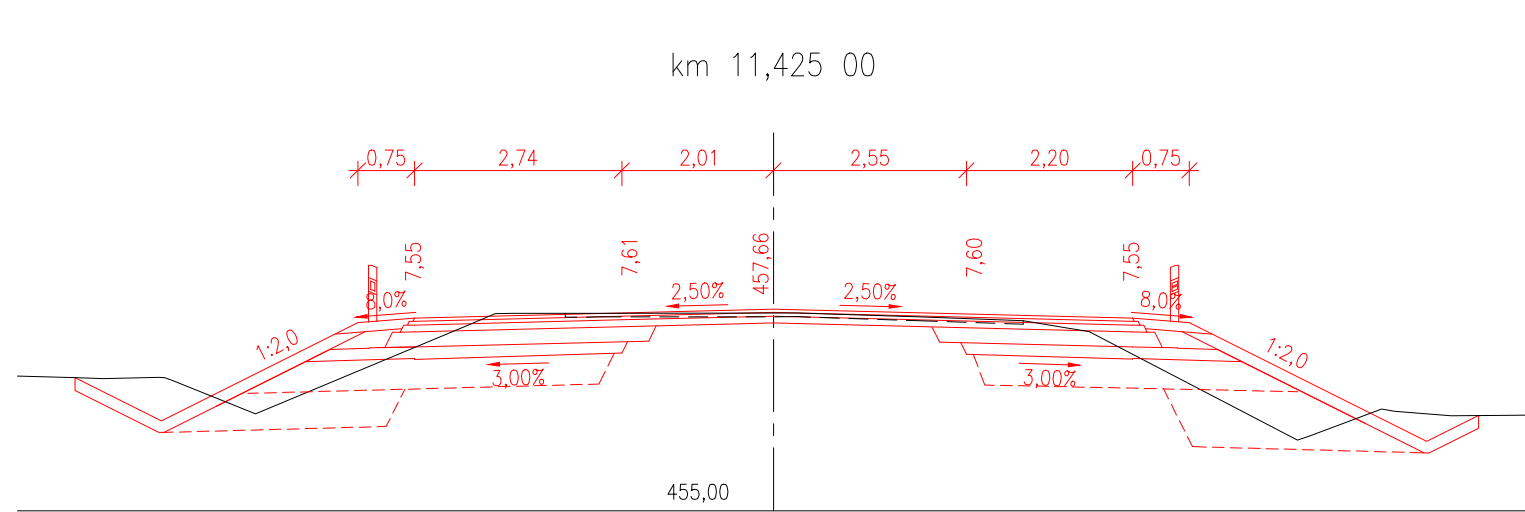
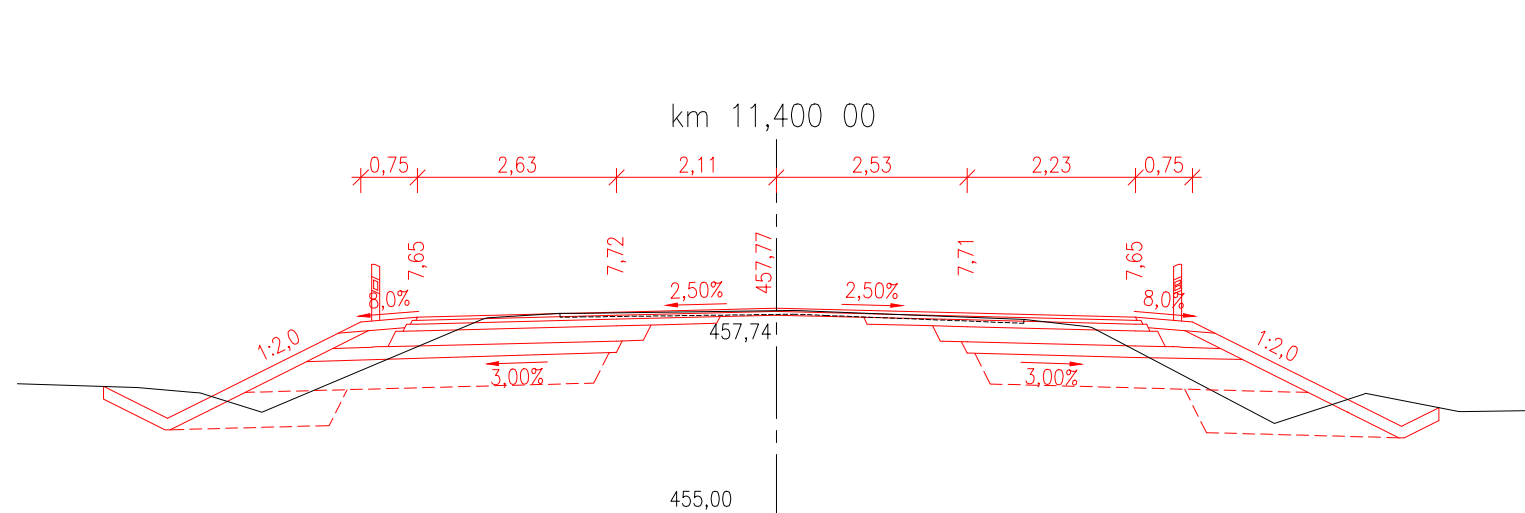
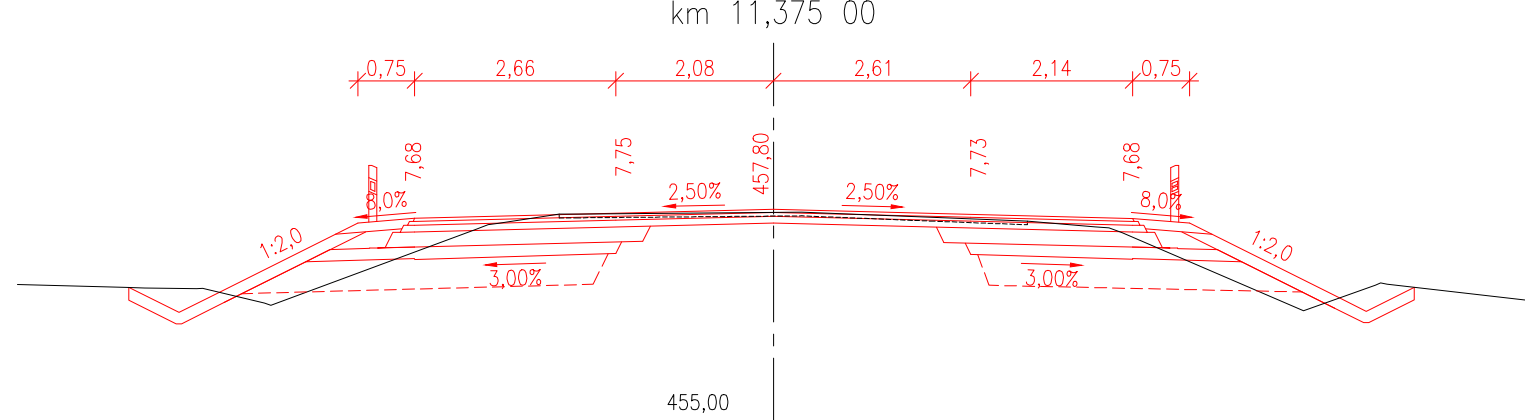
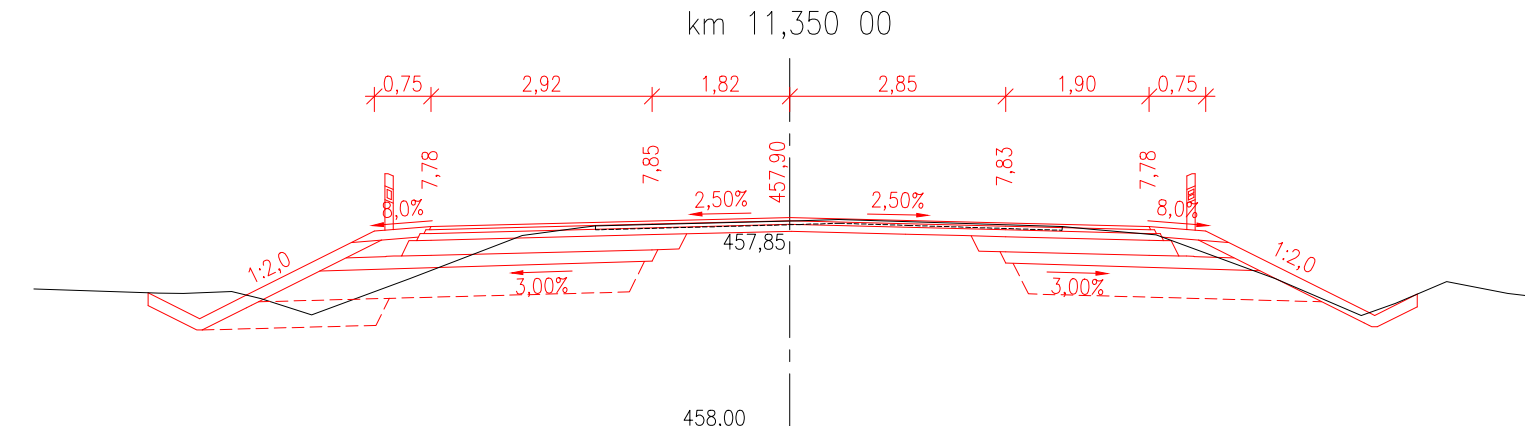
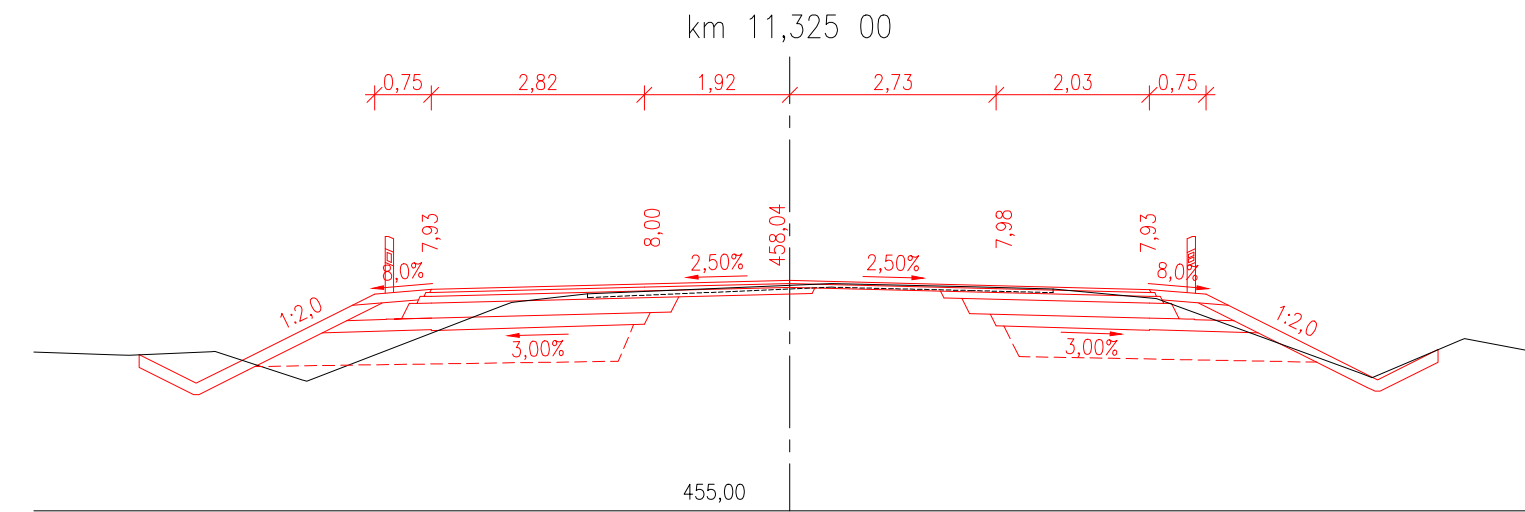
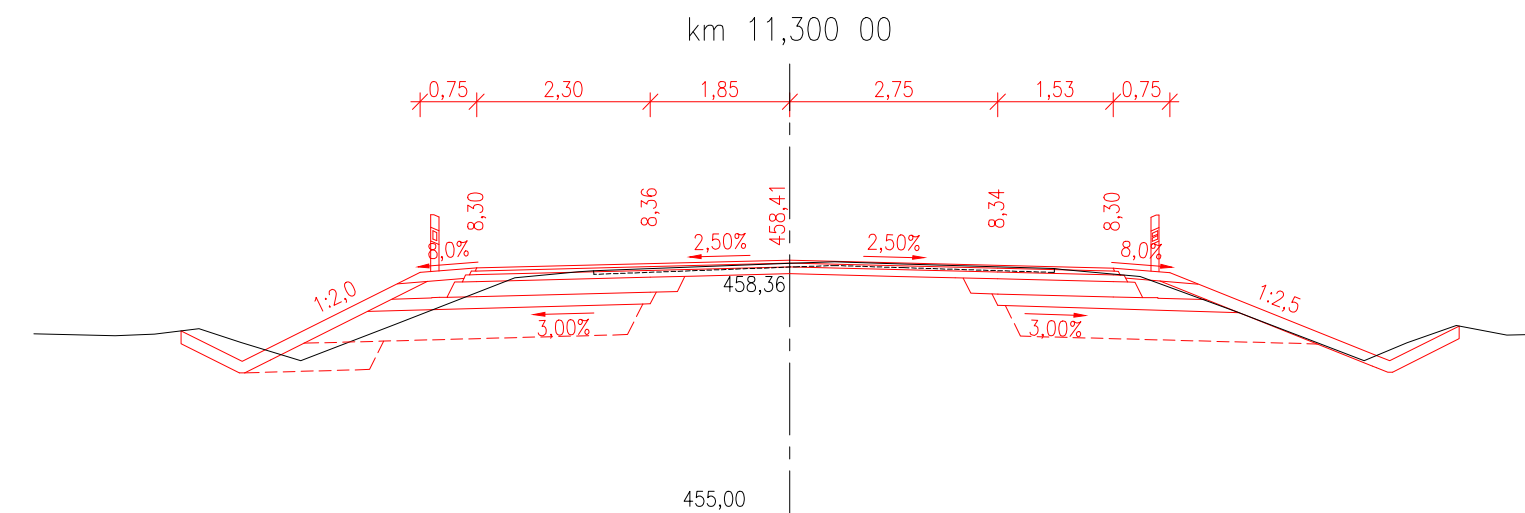
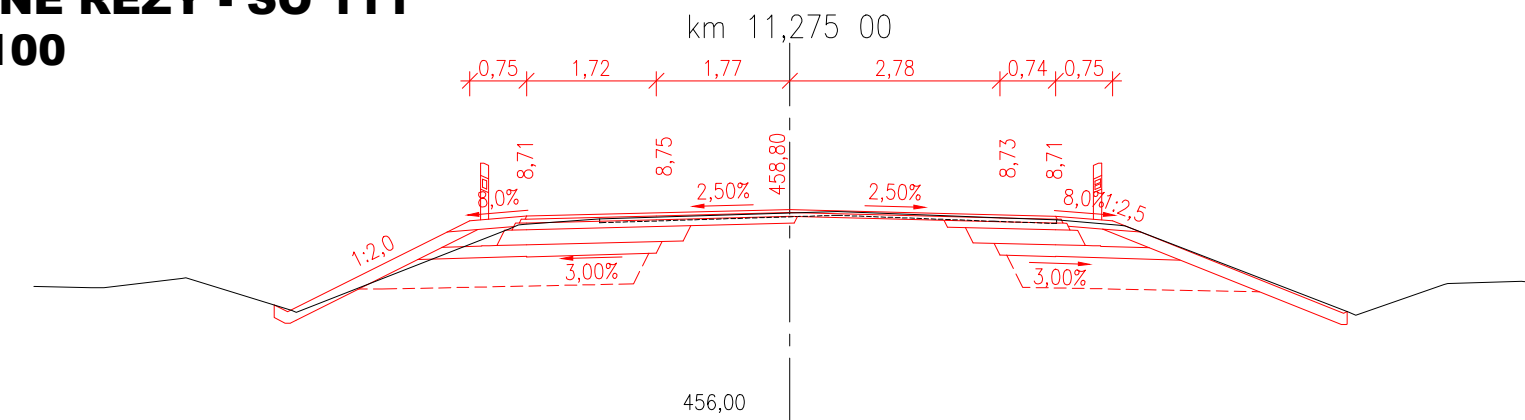


**II/351 TŘEBÍČ - KŘÍŽ. S II/399, 2. ČÁST**  
**PŘÍČNÉ ŘEZY - SO 111**  
**M 1:100**



Vyškovský systém Balt p.v. Souřadný systém S-JTŽS			
<b>Sweco Projektování a.s. Ústředí Praha</b> Tábořská 31, 140 16 Praha 4; praha@sweco.cz; www.sweco.cz			
VYPRACOVAVL Ing. Sáček	HIP Ing. Sáček	Ing. Sáček	T. KONTROLA Ing. Landa
PROJEKTANT Ing. Sáček	ŘEDITEL DIVIZE Ing. Charvátová	DATUM 08/2022	
OBJEDNATEL Krajský úřad Vysočina		OKRES Třebíč	
AKCE: II/351 Třebíč - křiž. s II/399, 2. část		ČÍSLO ZAKÁZKY 11-9209-0105	
		STUPEŇ PDPs	
		FORMÁT A4	
		MĚŘÍTKO 1:100	
		ARCHIVNÍ ČÍSLO 003699/22/1	
ČÁST STAVBY PRÍLOHA:	SO 100 - Objekty pozemních komunikací Příčné řezy - SO 111		SO1PS SO 111
		ČÍSLO PRÍLOHY D.2.5.4	